

# Why Choose a Career in Human Services?

*Do you care for others?  
Do you want to help people?  
Are you a social person?  
Do you want to make a  
difference in someone's life?  
In your Community?*

*If yes, then a career in Human  
Services may be for you!*

## CAREERS IN HUMAN SERVICES

EMPLOYMENT CONSULTANT\*

COMMUNITY SUPPORT COACH

QDDP (QUALIFIED DEVELOPMENTAL  
DISABILITY PROFESSIONAL)\*

SERVICE COORDINATOR\*

RETENTION SPECIALIST

MENTAL HEALTH COUNSELOR\*

SCHOOL COUNSELOR\*

SUBSTANCE ABUSE COUNSELOR\*

COMMUNITY SUPPORT WORKER

COMMUNITY SUPPORT COACH

SOCIAL WORKER

NURSE\*

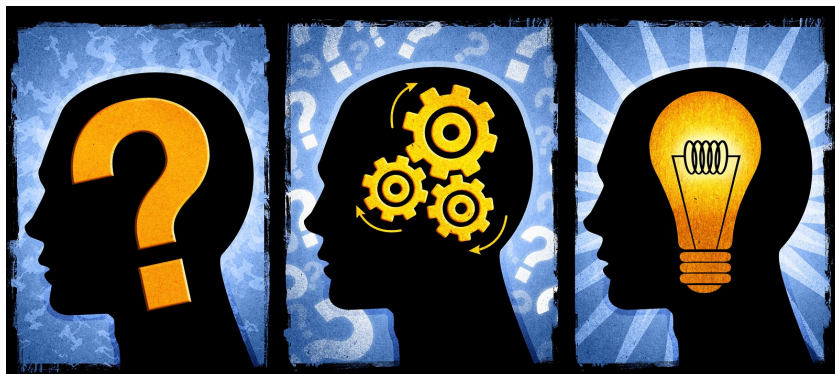
CERTIFIED NURSE'S AIDE (CNA)

\* REQUIRES BACHELOR'S DEGREE OR  
HIGHER LEVEL OF EDUCATION

## About Us

Learning Opportunities/Quality Works, Inc. (LOQW) is a non-profit, human services organization with the mission to positively impact the lives of individuals through *support, advocacy, and connection to resources.*

LOQW is a leader in providing community skills training, employment services, and service coordination in Northeast Missouri.



## What does it take to be a ... ?

**Retention Specialist:** The Retention Specialist is a temporary employee hired to give services to an individual at their individual job site. A Retention Specialist must have a high school diploma and can make anywhere from \$8 to \$12 per hour.

**Community Support coach:** The Community Support Coach acts as an advocate and provides training and support to an individual as they work toward meeting the goals of their goals. A Community Support Coach must have a high school diploma and can make anywhere from \$8 to \$12 per hour.

# What does it take to be a ... ?

(Continued)



## **Employment Consultant:**

The Employment Consultant builds & maintains effective job development methods and work placement sites.

The Employment Consultant must have a bachelor's de-

gree in any field and can make anywhere from \$10 to \$15 per hour.

## **QDDP:** The Qualified Developmental Disability Professional (QDDP)

serves as the participants advocate, services coordinator, and case manager. This person is responsible for the supervision of other staff persons directly responsible for the delivery of service to referred individuals within the employment/community program. A QDDP requires a bachelor's degree in a human services field and can make up to \$15 per hour.

## **Service Coordinator:** The Service Coordinator is responsible for

managing a multifaceted caseload, functions as a lead person in coordinating and assisting families in developing specialized ser-

vices for those with a develop-

mental disability . A Service Coor-

dinator must have a bachelor's de-

gree in a human services field and

can earn around \$30,000/year.



## **LEARN MORE ABOUT HUMAN SERVICES CAREERS ON THE WEB!**

[www.onet.com](http://www.onet.com)

[www.loqw.com](http://www.loqw.com)

[www.missouricareersource.com](http://www.missouricareersource.com)

[www.missouriconnections.com](http://www.missouriconnections.com)

## Contact LOQW, Inc.

Monroe City Office  
201 North Locust Street  
P. O. Box 254  
Monroe City, MO 63456  
Phone: (573) 735-4282  
Fax: (573) 735-2580

Hannibal Office  
111 S. 10th Street  
Hannibal, MO 63456  
Phone: (573) 221-5991  
Fax: (573) 221-8559

Macon Office  
204 Crescent Drive  
P.O. Box 524  
Macon, MO 63552  
Phone: (660) 385-6325  
Fax: (660) 385-6326

Kirkville Office  
312 West Washington Street  
P.O. Box 246  
Kirkville, MO 63501  
Phone: (660) 627-1749  
Fax: (660) 665-4035

Shelbina Office  
316 South Second Street  
P. O. Box 254  
Shelbina, MO 63468  
Phone: (573) 588-7919  
Fax: (573) 588-0133

[www.loqw.com](http://www.loqw.com)

